



NOAA
FISHERIES
Headquarters

Ecosystem-Based Fisheries Management and Climate Regional Action Plans

Implementation Update

February 28, 2018

Why EBFM?

- Supports meeting sustainable fisheries goals under multiple mandates
- Addresses and prepares for challenges in changing environments
- Facilitates discussion of tradeoffs



EBFM Implementation Plan Progress

- 2016: EBFM Policy and Roadmap released
- Currently: Developing draft plans with Council staff participation if desired on regional teams.
- March - April 2018: Draft implementation plans available for NMFS Leadership and Council ED review
- May 2018: Briefing to CCC on EBFM plans
- June- August/September 2018: Draft plans available for full Council and public comment
- December 2018: Rollout final implementation plans

Purpose of the EBFM Implementation Plans

- Coordinate regional science and management priorities
- Build collaborative relationships among regions, centers and Councils
- Describe engagement strategies that will increase awareness and support
- Provide a method to document progress implementing EBFM

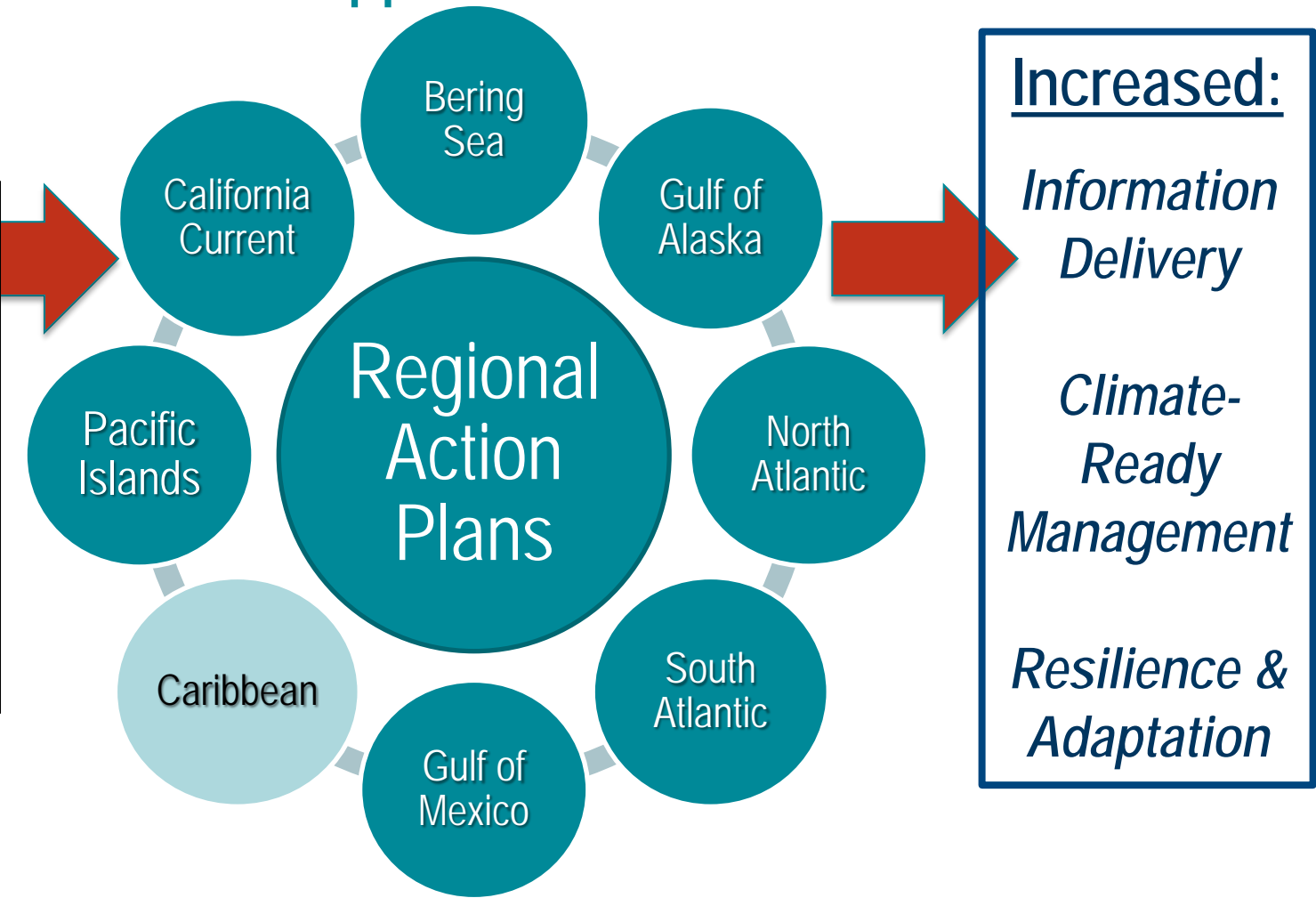
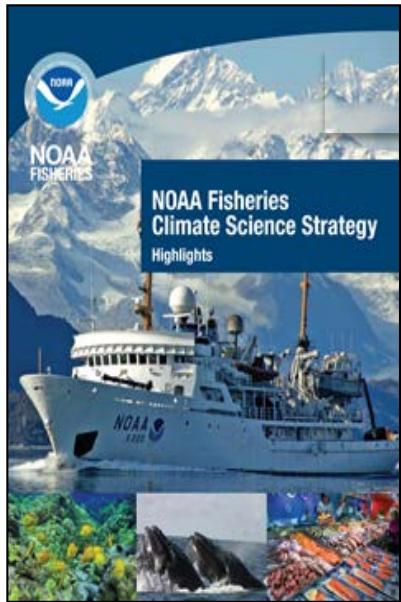


EBFM Regional Implementation Plans Contents

- Engagement strategies to strengthen coordination and communication
- Specific EBFM priority milestones over five years that
 - Build off of ongoing EBFM work
 - Are aligned with the EBFM Roadmap and other ongoing initiatives (e.g. Climate Science Strategy, Stock Assessment Improvement Plan)
- Regional outcomes and benefits of successful EBFM implementation



Implementation of the NMFS Climate Science Strategy Supports EBFM



<http://www.st.nmfs.noaa.gov/ecosystems/climate/>

Priority Actions In All RAPs:

- *Complete Climate Vulnerability Assessments* (fish stocks, protected species, fishing communities)
- *Improve tracking and reporting* on changing distributions and ecosystem conditions
- *Targeted research* to understand mechanisms of impacts
- *Improve forecasts & early warnings*
- *Evaluate alternative management strategies* for changing conditions



QUESTIONS?

