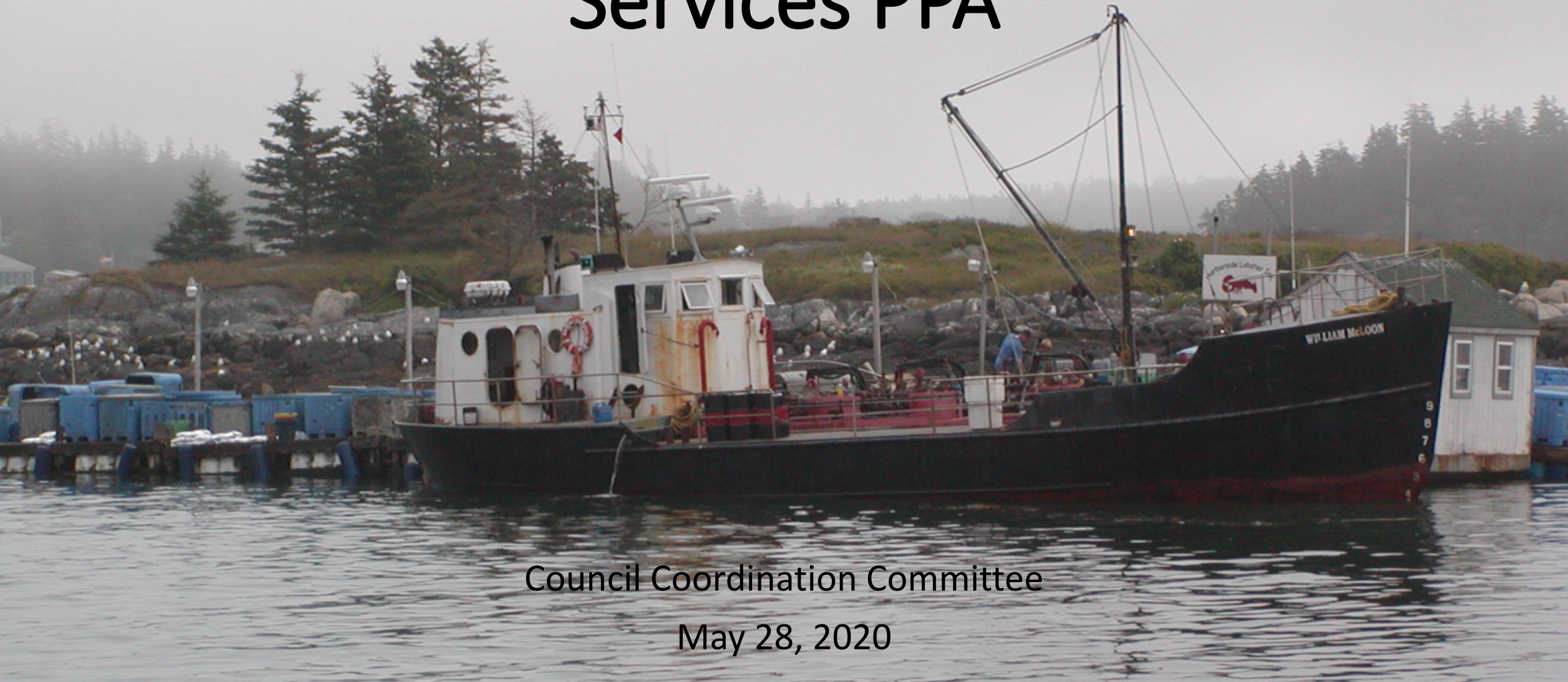


# Fishery Management and Services PPA



Council Coordination Committee

May 28, 2020

# FY 2019 Council Funding

NMFS Funding Source (\$ in Thousands)	FY 2018 Spend Plan	FY 2019 Spend Plan	New England	Mid- Atlantic	South Atlantic	Gulf of Mexico	Caribbean	North Pacific	Pacific	Western Pacific
→ Regional Council PPA	\$24,462	\$26,612	\$3,899	\$3,380	\$2,861	\$3,446	\$1,823	\$4,165	\$3,905	\$3,134
→ Fisheries Management Programs & Services PPA	\$5,138	\$4,138	\$608	\$465	\$511	\$474	\$251	\$574	\$679	\$574
National Environmental Policy Act	\$756	\$756	\$111	\$96	\$81	\$98	\$52	\$118	\$111	\$89
ACL Implementation	\$1,678	\$1,678	\$246	\$213	\$180	\$217	\$115	\$263	\$246	\$198
Regulatory Streamlining Program	\$758	\$758	\$111	\$96	\$81	\$98	\$52	\$119	\$111	\$89
SSC Stipends	\$474	\$474	\$69	\$60	\$51	\$61	\$32	\$74	\$69	\$56
Council Peer Review	\$474	\$474	\$71	\$0	\$118	\$0	\$0	\$0	\$142	\$142
Deregulation/Reg Reform	\$1,000	\$0	\$0	\$0	\$0	\$0	\$0	\$0	\$0	\$0
→ Fisheries Data Collections, Surveys, & Assessments PPA	\$512	\$512	\$0	\$0	\$482	\$30	\$0	\$0	\$0	\$0
Expand Annual Stock Assessments	\$512	\$512	\$0	\$0	\$482	\$30	\$0	\$0	\$0	\$0
FY 2019 Spend Plan*		\$31,262	\$4,507	\$3,845	\$3,855	\$3,951	\$2,074	\$4,738	\$4,585	\$3,707
FY 2018 Spend Plan	\$30,112		\$4,338	\$3,699	\$3,731	\$3,802	\$1,995	\$4,558	\$4,416	\$3,572

\*Columns may not add due to rounding



# Executive Director Discussion

- Council Peer Review and Expand Annual Stock Assessments were/are not distributed to all Councils and are not distributed using the Council formula.
- Transparency about original reasons for funding is lost if everything combined into one line
- Distribution of future changes in overall PPA amount needs to be defined



# Recommendation

- Support use of one PPA with three activities:
  - Stock Assessment Support (SAS) (former “Expand Annual Stock Assessments”)
  - Peer Review Support (PRS) (former “Council Peer Review”)
  - Council Management Programs
- 2019 values for (SAS) and (PRS) do not change (one exception)
- SAS and PRS are allocated; remainder of PPA is distributed using Council formula
- This approach is revisited if total PPA declines by more than 10% from the 2019 total amount (i.e. less than ~\$28. million)

## ***Overall PPA number is for illustration only!***

*Proposed Allocation of 2021 Regional Council PPA based on 2019 spend plan, with breakouts by activity.*

NMFS Funding Source (\$ in Thousands)	FY 2021 Spend Plan	New England	Mid- Atlantic	South Atlantic	Gulf of Mexico	Caribbean	North Pacific	Pacific	Western Pacific
<b>Regional Council PPA</b>	<b>\$33,898</b>								
<i>Activities</i>									
Stock Assessment Support	\$512	\$0	\$0	\$482	\$30	\$0	\$0	\$0	\$0
Peer Review Support	\$474	\$71	\$0	\$118	\$0	\$0	\$0	\$142	\$142
Council Management Programs	\$32,912	\$4,822	\$4,180	\$3,538	\$4,262	\$2,254	\$5,151	\$4,830	\$3,875
<i>% by Council</i>		<i>14.650%</i>	<i>12.700%</i>	<i>10.750%</i>	<i>12.950%</i>	<i>6.850%</i>	<i>15.650%</i>	<i>14.675%</i>	<i>11.775%</i>
<b>TOTAL</b>	<b>\$33,898</b>	<b>\$4,893</b>	<b>\$4,180</b>	<b>\$4,138</b>	<b>\$4,292</b>	<b>\$2,254</b>	<b>\$5,151</b>	<b>\$4,972</b>	<b>\$4,017</b>



# Questions?

